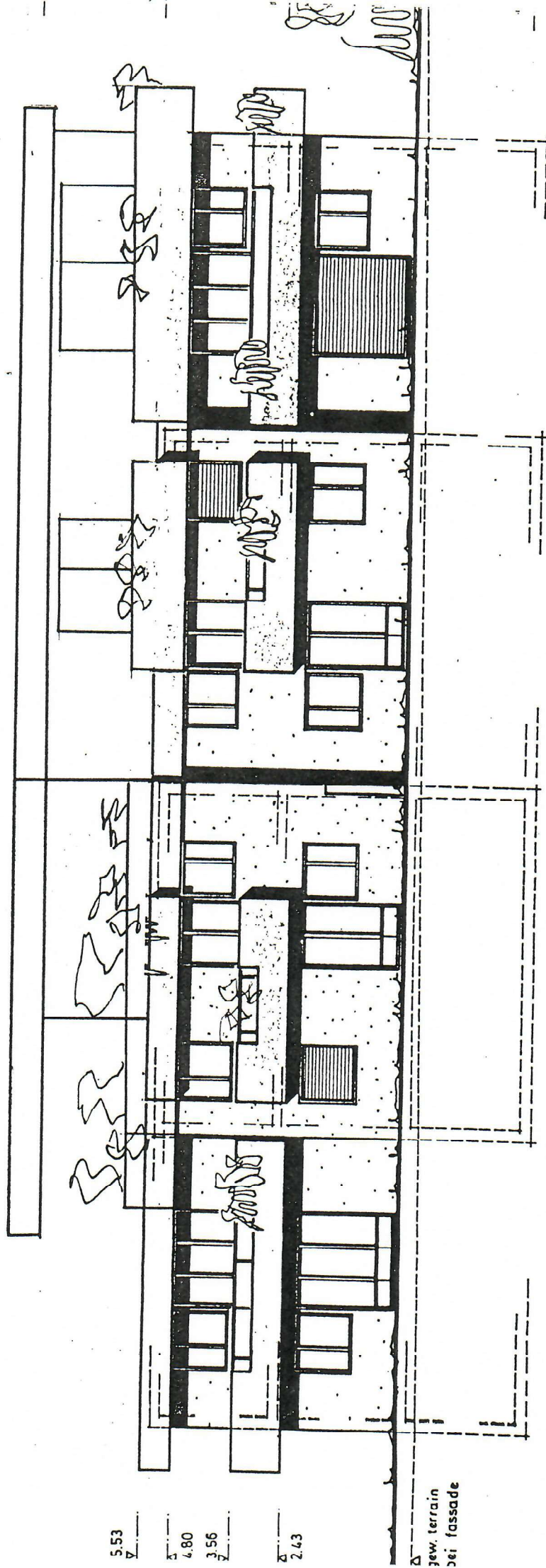


1:100 (verkleinert)

Beilage 7



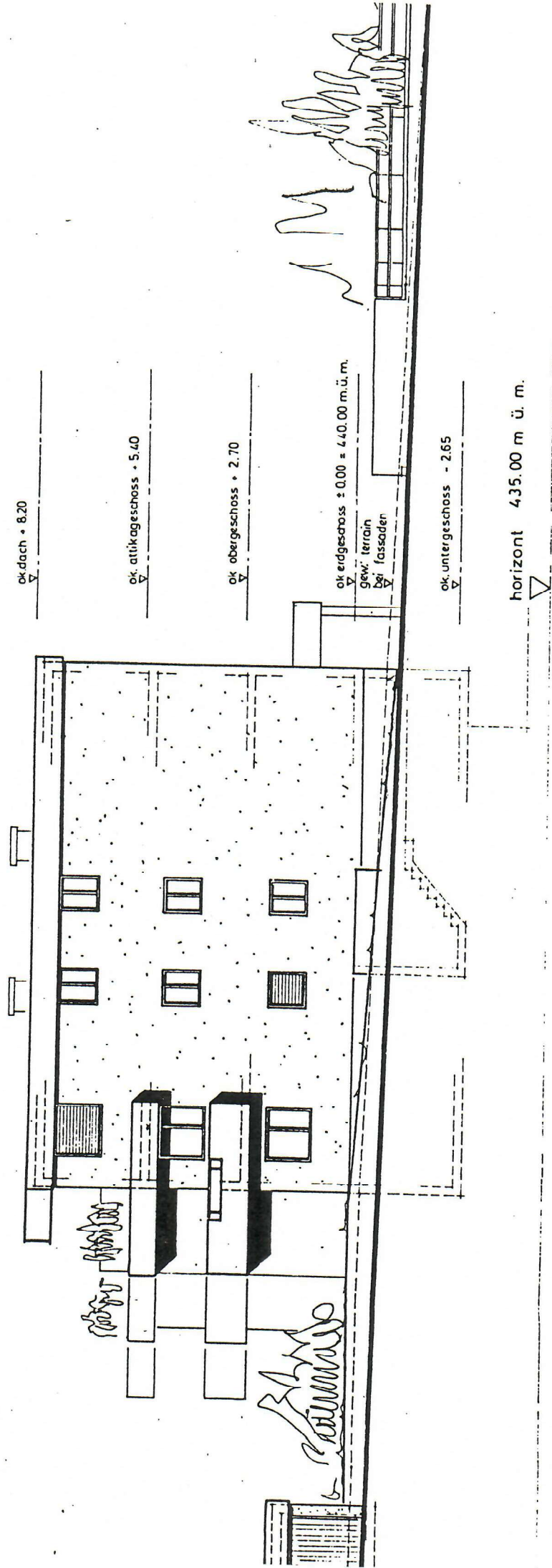
block **1**


block **2**

südfassade

1:100 (verkleinert)

Beilage 8

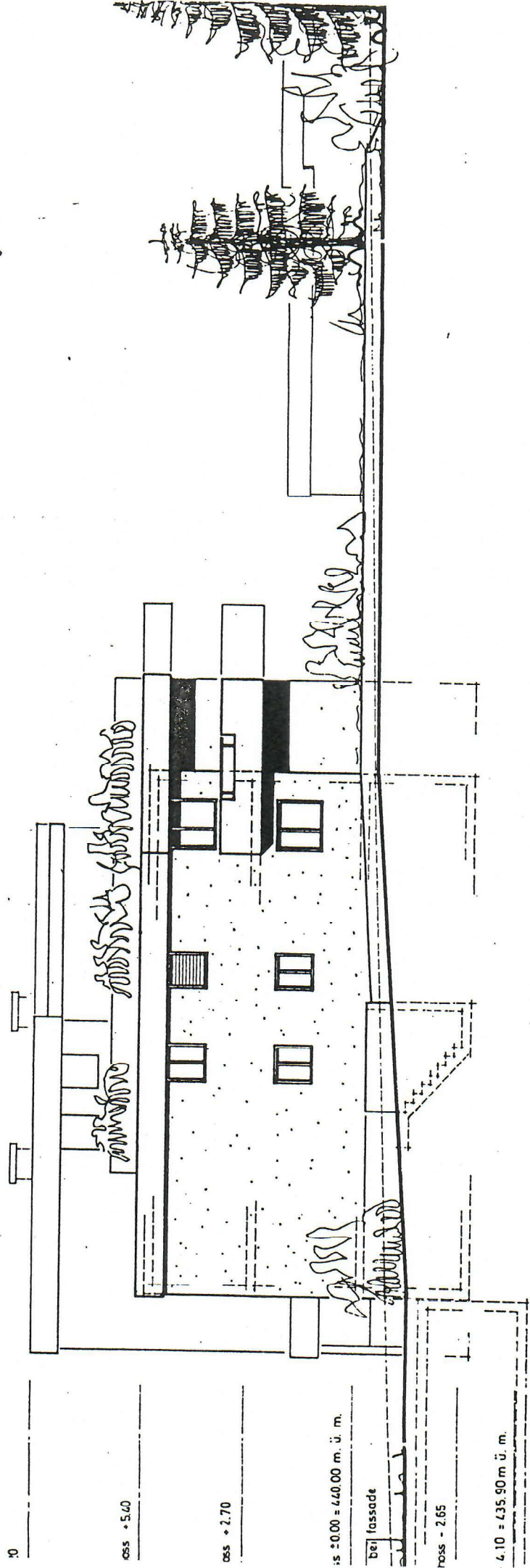


block 

ostfassaden

1:100 (verkleinert)

Beilage 9



10

0ss + 5.60

0ss + 2.70

1s ± 0.00 = 440.00 m. ü. m.

bei fassade

ross - 2.65

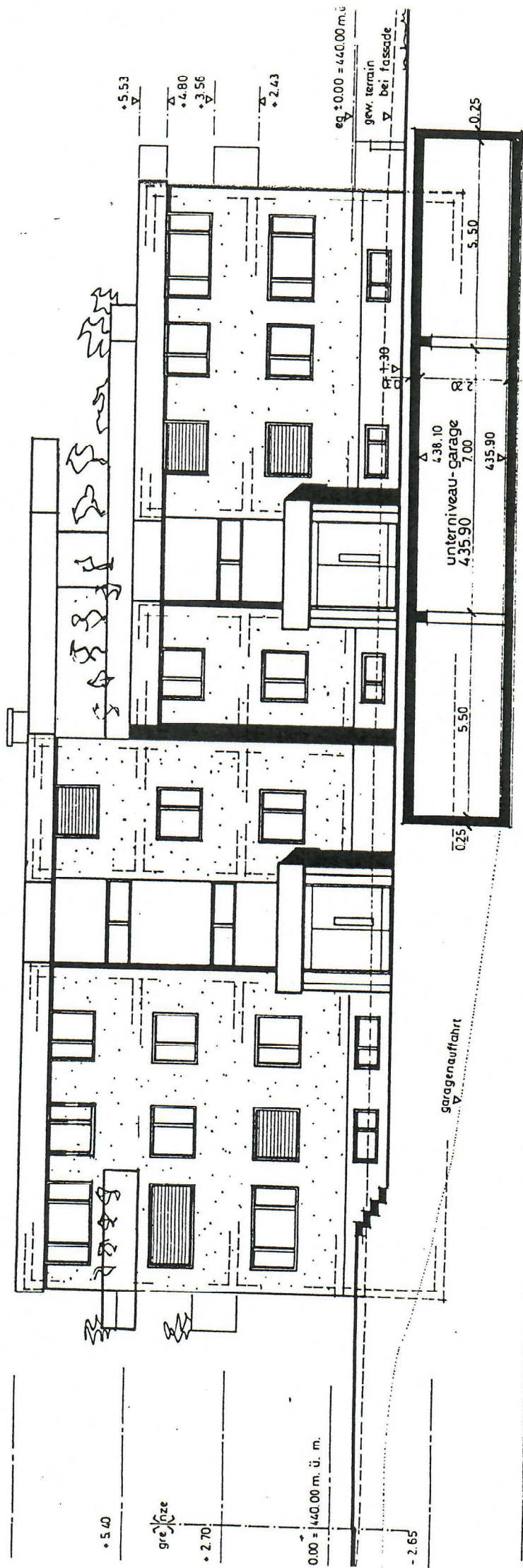
4.10 = 435.90 m. ü. m.

block **1**

westfassaden

1:100 (verkleinert)

Beilage 10



block C

block D

nordfassade